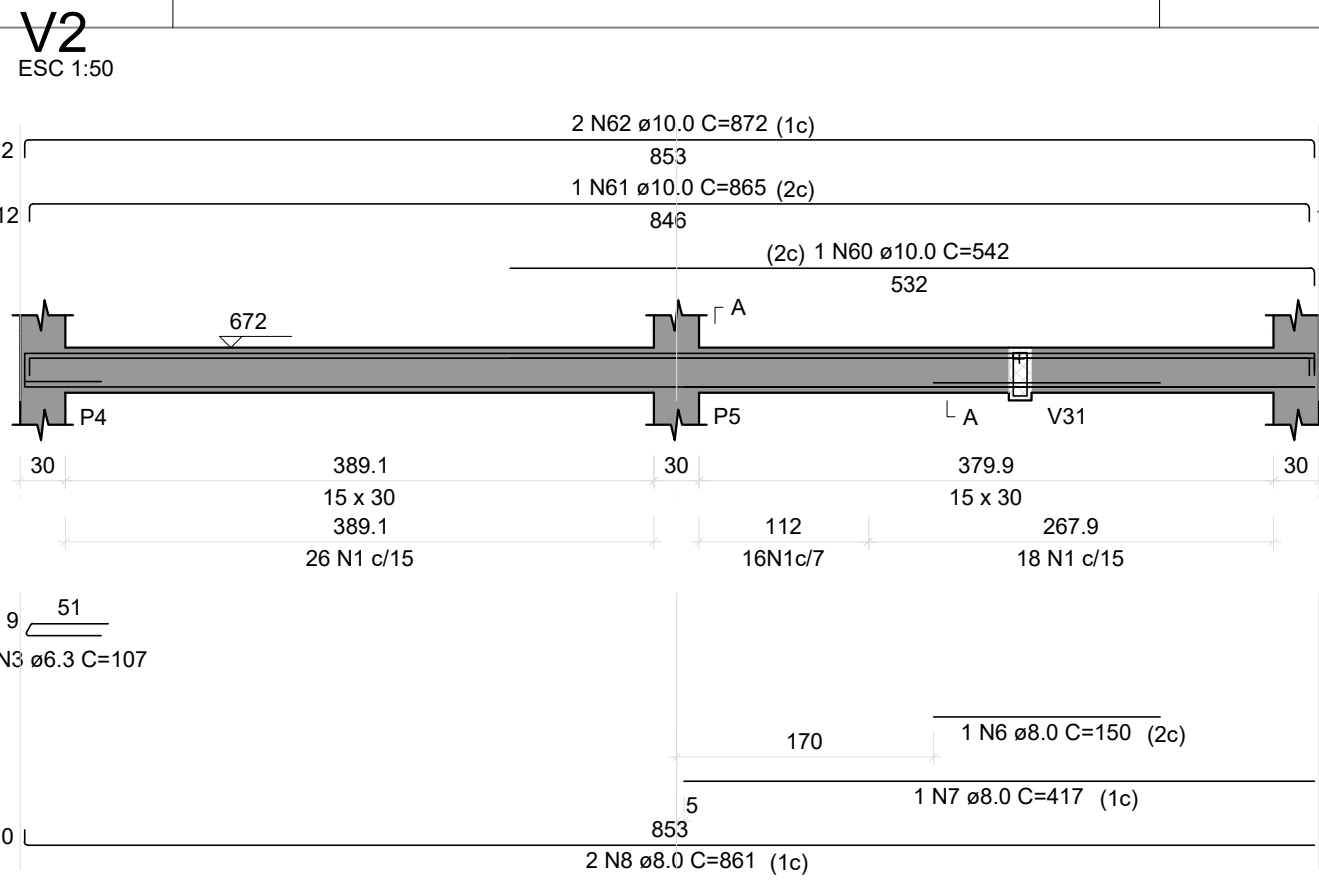
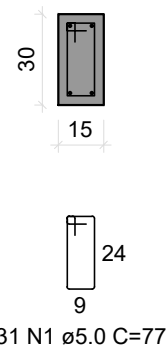
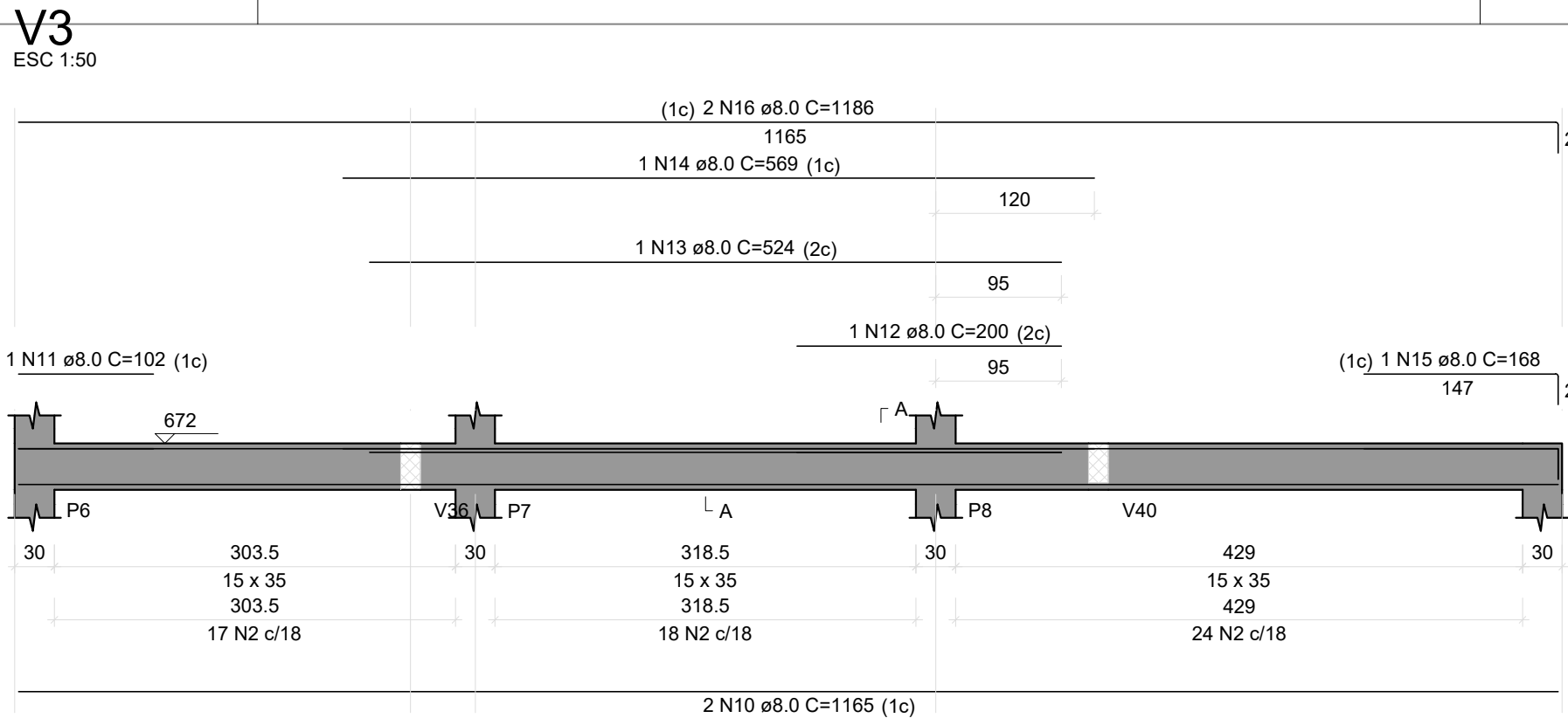
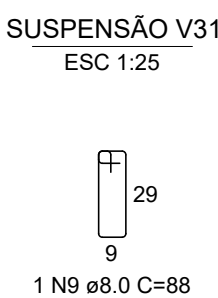
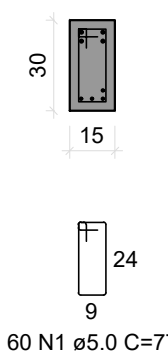


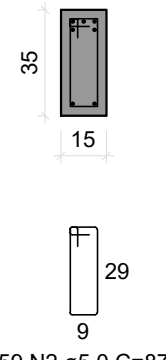
SEÇÃO A-A
ESC 1:25



SEÇÃO A-A
ESC 1:25

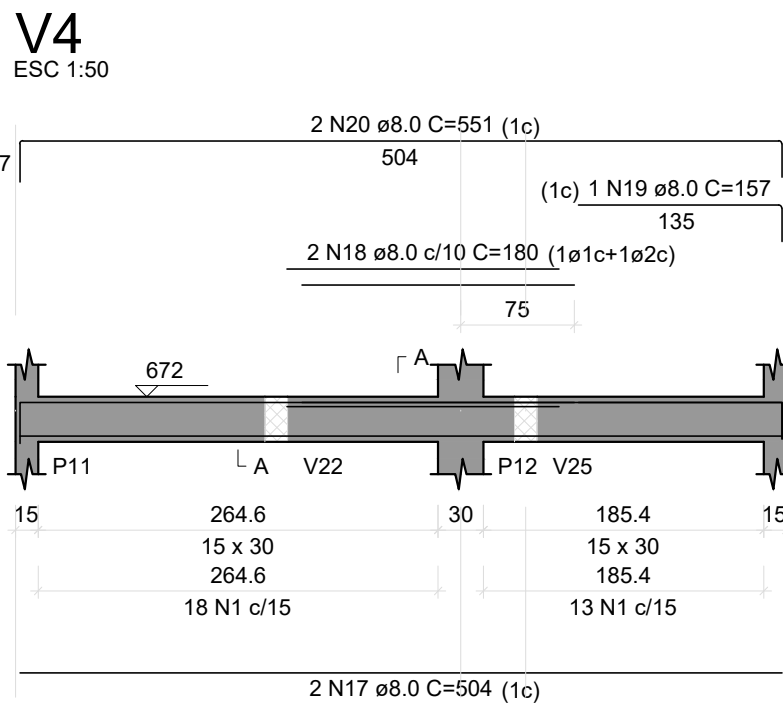


SEÇÃO A-A
ESC 1:25

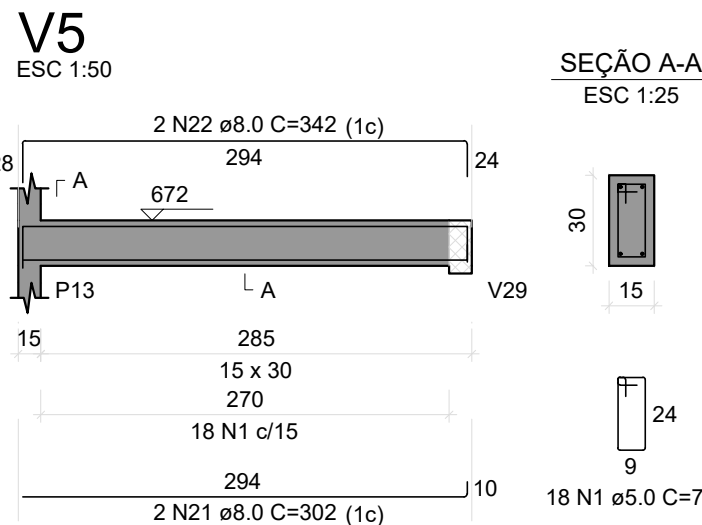
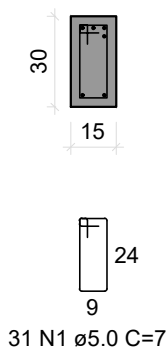


RELAÇÃO DO AÇO

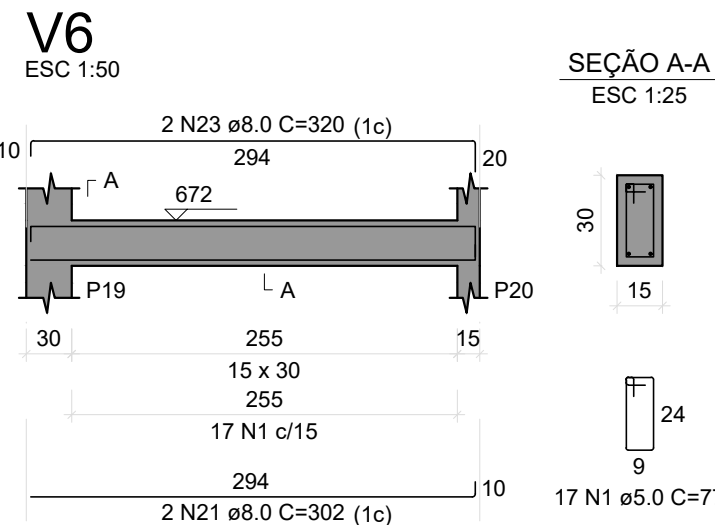
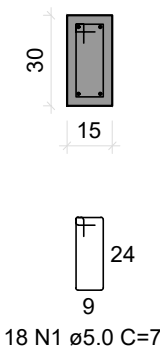
AÇO	N	DIAM (mm)	QUANT	C.UNIT (cm)	C.TOTAL (cm)
CA60	1	5,0	497	77	38269
V4	2	5,0	180	87	15680
V6	3	6,3	1	107	107
V8	4	8,0	2	512	1024
V10	5	8,0	2	540	1080
V13	6	8,0	1	150	150
	7	8,0	1	417	417
	8	8,0	2	861	1722
	9	8,0	1	98	98
	10	8,0	2	1165	2330
	11	8,0	2	102	204
	12	8,0	2	200	400
	13	8,0	1	524	524
	14	8,0	1	569	569
	15	8,0	1	168	168
	16	8,0	2	1186	2372
	17	8,0	2	504	1008
	18	8,0	2	180	360
	19	8,0	1	157	157
	20	8,0	2	551	1102
	21	8,0	4	302	1208
	22	8,0	2	342	684
	23	8,0	2	320	640
	24	8,0	1	192	192
	25	8,0	2	889	1778
	26	8,0	2	130	260
	27	8,0	1	256	256
	28	8,0	1	220	220
	29	8,0	1	482	482
	30	8,0	1	954	954
	31	8,0	2	1015	2030
	32	8,0	2	789	1578
	33	8,0	3	165	495
	34	8,0	2	811	1622
	35	8,0	2	836	1672
	36	8,0	1	263	263
	37	8,0	2	1163	2326
	38	8,0	2	100	200
	39	8,0	2	207	414
	40	8,0	2	311	622
	41	8,0	2	317	634
	42	8,0	1	107	107
	43	8,0	2	327	654
	44	8,0	2	714	1428
	45	8,0	1	340	340
	46	8,0	2	585	1170
	47	8,0	2	181	362
	48	8,0	2	1125	2250
	49	8,0	2	865	1730
	50	8,0	1	160	160
	51	8,0	4	210	840
	52	8,0	1	516	516
	53	8,0	1	905	905
	54	8,0	4	1200	4800
	55	8,0	1	256	256
	56	8,0	1	1018	1018
	57	8,0	2	1159	2318
	58	8,0	2	327	654
	59	8,0	2	98	196
	60	10,0	1	542	542
	61	10,0	1	865	865
	62	10,0	2	872	1744
	63	10,0	1	225	225
	64	10,0	2	742	1484
	65	12,5	1	220	220
	66	12,5	2	1197	2394
	67	12,5	2	914	1828



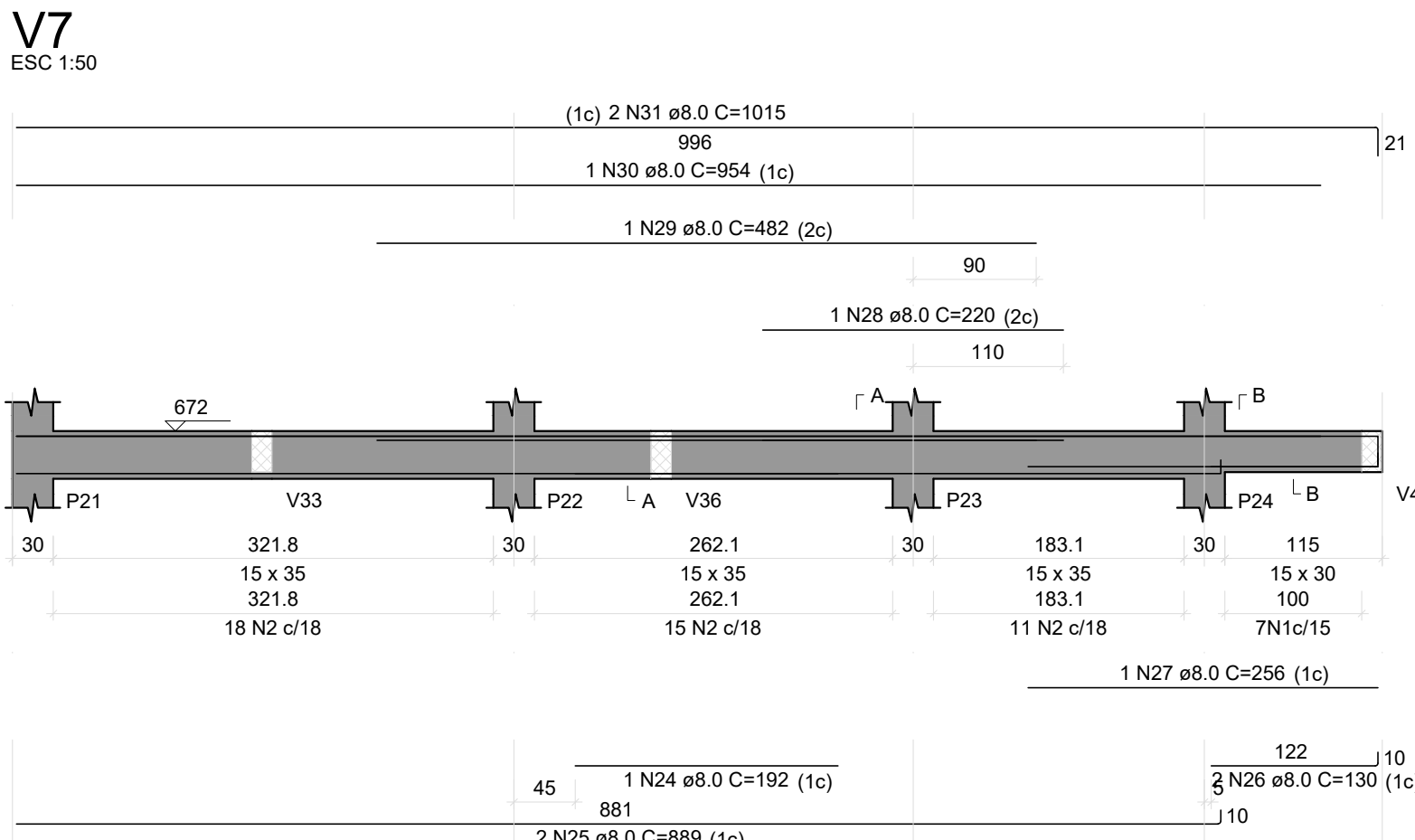
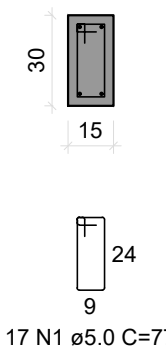
SEÇÃO A-A
ESC 1:25



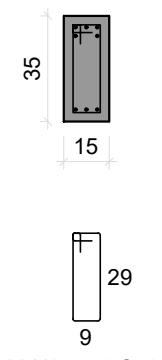
SEÇÃO A-A
ESC 1:25



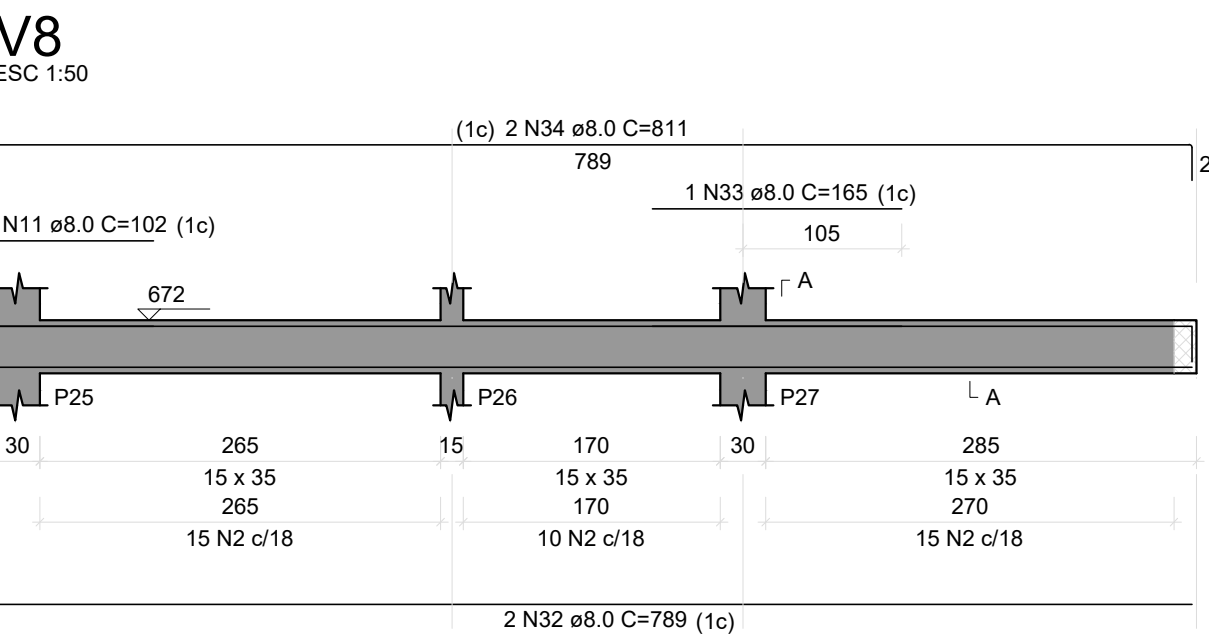
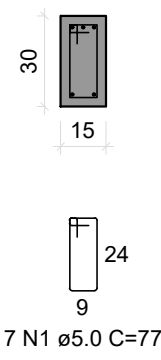
SEÇÃO A-A
ESC 1:25



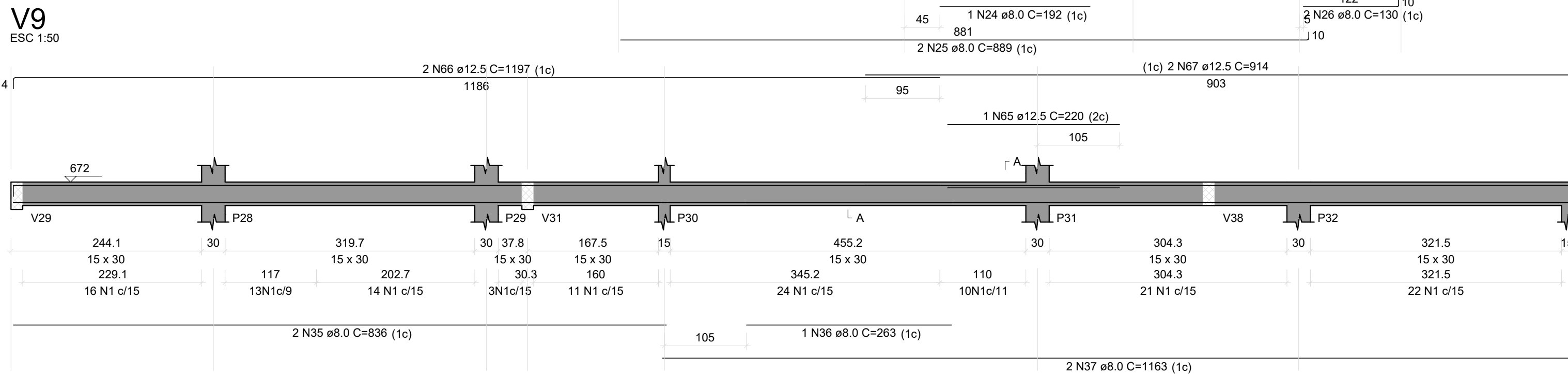
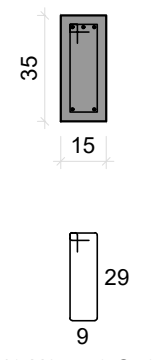
SEÇÃO A-A
ESC 1:25



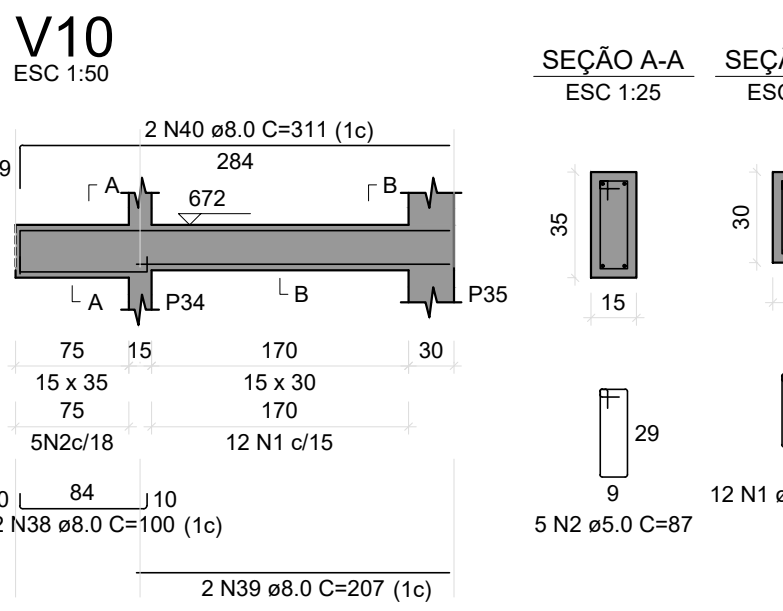
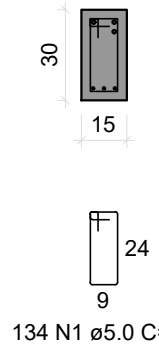
SEÇÃO B-B
ESC 1:25



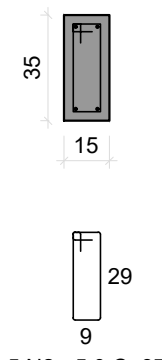
SEÇÃO A-A
ESC 1:25



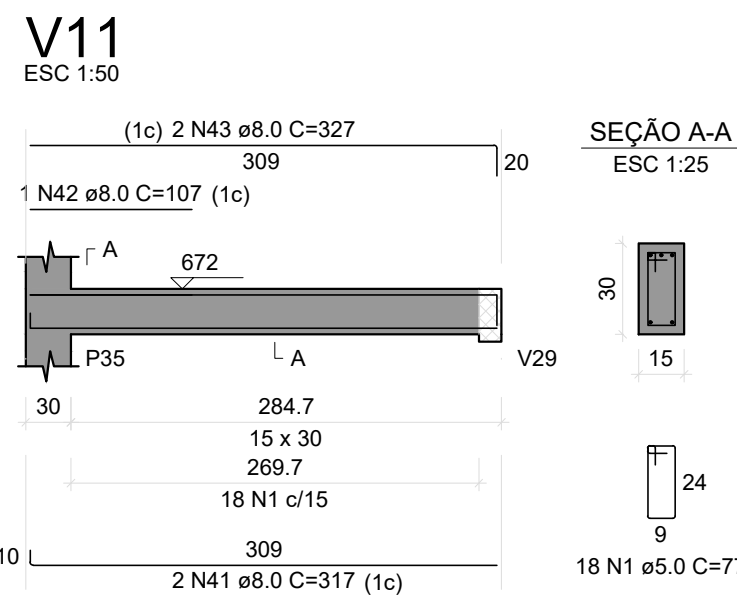
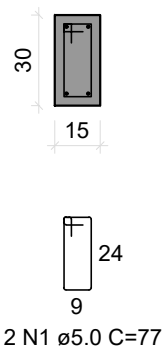
SEÇÃO A-A
ESC 1:25



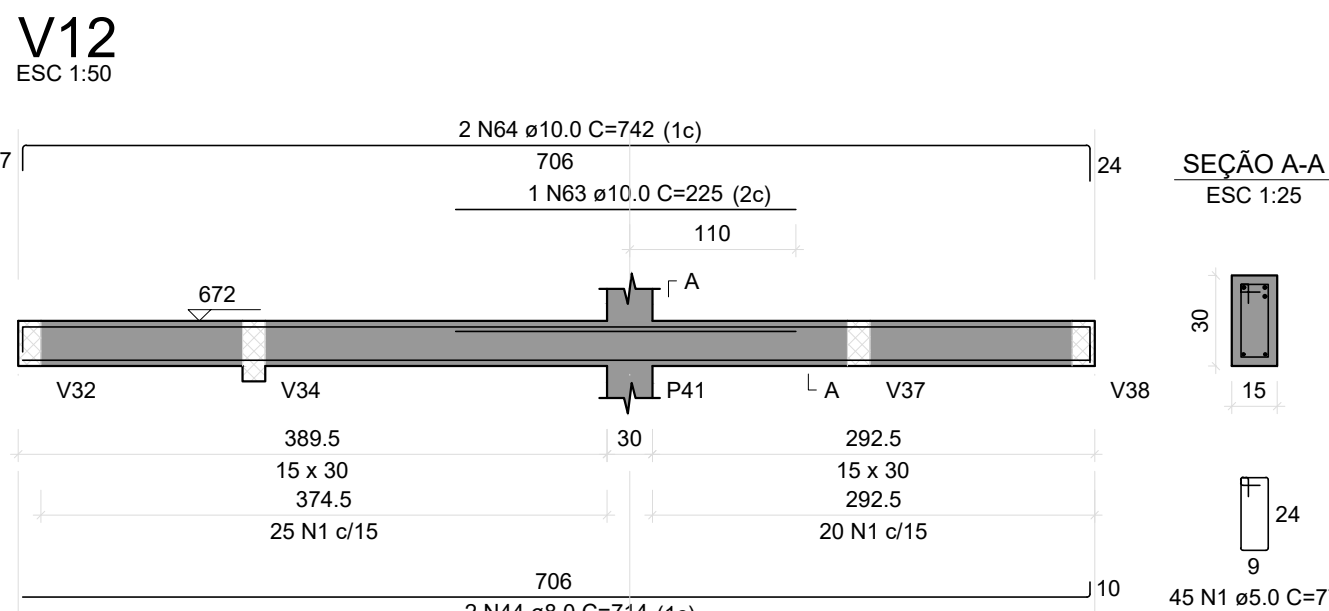
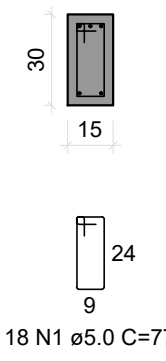
SEÇÃO A-A
ESC 1:25



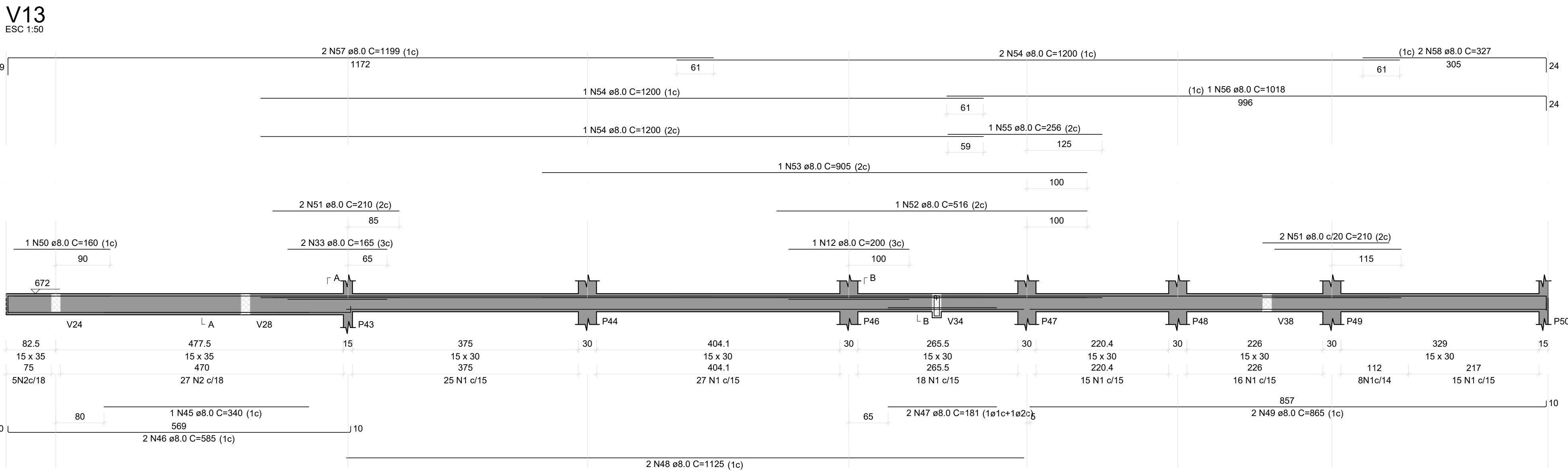
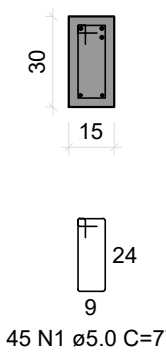
SEÇÃO B-B
ESC 1:25



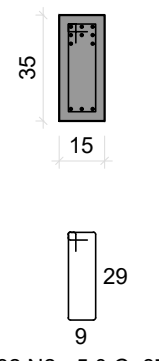
SEÇÃO A-A
ESC 1:25



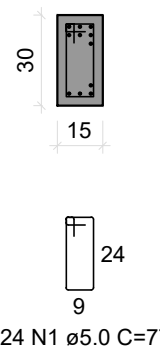
SEÇÃO A-A
ESC 1:25



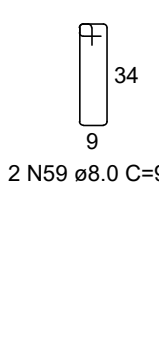
SEÇÃO A-A
ESC 1:25



SEÇÃO B-B
ESC 1:25



SUSPENSÃO V34
ESC 1:25



BLOCO DO CORPO DE BOMBEIROS PRANCHAS DE: 098 a 152

REVISÃO	DESCRIÇÃO	REVISADO POR	DATA
REVISÃO 00	EMISSIONAL	WAGNER	MARÇO/2024

 SERGIPE GOVERNO DO ESTADO		DIRETORIA DE ARQUITETURA E EDIFICAÇÕES PRAÇA TOBIAS BARRETO, nº 20, BAIRRO SÃO JOSÉ CEP: 49050-220 ARACAJU/SE TELS: (79)3210-5454 / (79)98551-9337	
TIPO PROJETO: ESTRUCTURAL EXECUTIVO DA CONSTRUÇÃO DO CENTRO INTEGRADO DE SEGURANÇA PÚBLICA (CISP) EM NOSSA SENHORA DA GLÓRIA/SE		Nº DA PRANCHA	
ASSUNTO: BLOCO DO CORPO DE BOMBEIROS VIGAS NO PRIMEIRO PAVIMENTO		125/438	
END.: RUA ANTONIO JOAQUIM DE FARIAS, S/N – N. SRA DA GLÓRIA – SE			
AUTOR DO PROJETO: WAGNER DARY DA SILVA			
RESPONSÁVEL TÉCNICO: WAGNER DARY DA SILVA		RN: 270771497 – 6	
ESCALA: INDICADO	DATA: MARÇO/2024	DESENHISTA: WAGNER DARY DA SILVA	